

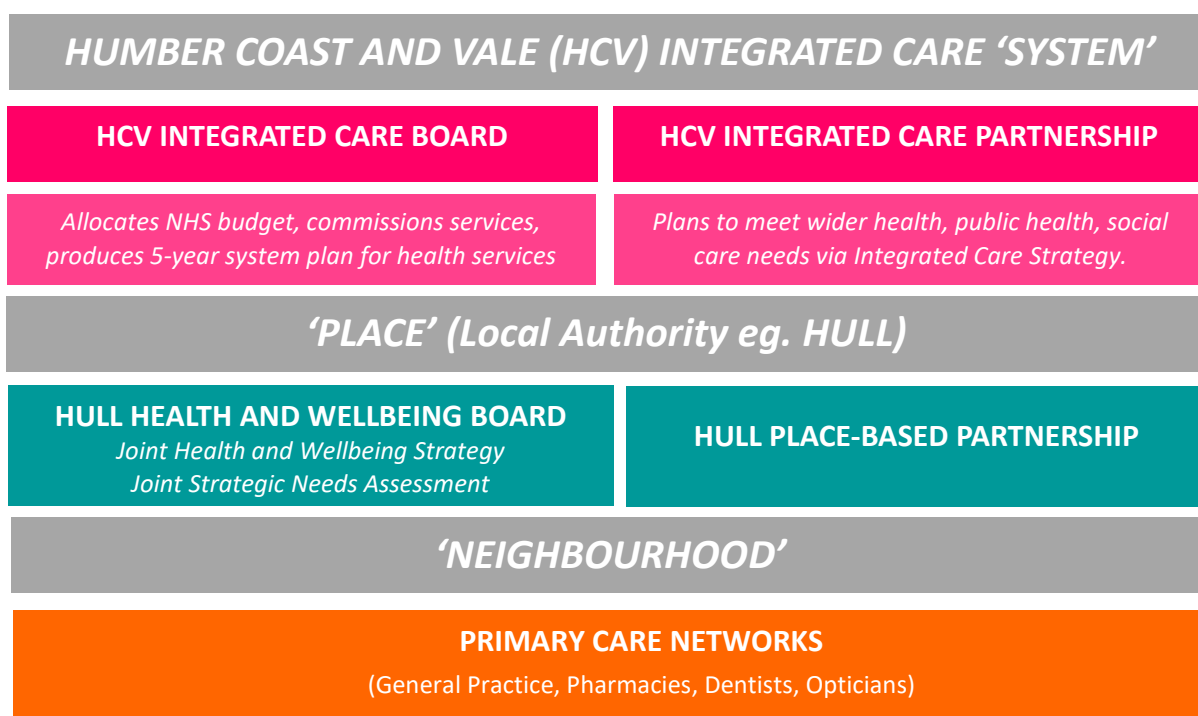
## What is an Integrated Care System (ICS)?

**Integrated Care Systems (ICSs)** are new geographically based partnerships between the organisations that meet health and care needs across an area, to plan and co-ordinate services in a way that improves population health and reduces health inequalities between groups. They are part of a fundamental shift in the way the health and care system is organised – away from competition and towards collaboration and integration of services to improve population health.

ICSs have been developing for several years but will commence formally from April 2022, at which time local Clinical Commissioning Groups (CCGs), as organisational structures, will disappear.

Each ICS will be made up of two key bodies – an **Integrated Care Board (ICB)** and an Integrated **care Partnership (ICP)**.

Together with North Yorkshire, Vale of York, East Riding of Yorkshire, North Lincolnshire and North East Lincolnshire, Hull is part of the **Humber Coast and Vale ICP** (<https://humbercoastandvale.org.uk>) serving a population of 1.7 million people, all with different health and care needs. Hull sits within the ICS as a defined **'Place'** (so when the strategy mentions 'Place', we mean Hull).



**Integrated care boards (ICBs)** will take on the NHS planning functions previously held by clinical commissioning groups (CCGs) and will produce a five-year plan (updated annually) for how NHS services will be delivered to meet local needs. In developing this plan the ICB must have regard to their partner ICP's Integrated Care Strategy and be informed by the joint Health and Wellbeing Strategies published by their constituent Health and Wellbeing Boards. ICBs have a range of legal duties, including to:

- 1) Promote the NHS Constitution
- 2) Reduce inequalities
- 3) Maintain patient choice, and
- 4) Promote integration

**Integrated care partnerships (ICPs)** will operate as a statutory committee, bringing together the NHS and local authorities as equal partners to focus more widely on health, public health and social care via representation from the ICB, local authorities, NHS providers, public health, social care, housing services, and voluntary, community and social enterprise (VCSE) organisations. The ICP will develop an Integrated Care Strategy for meeting the wider health needs of the local population, informed by relevant Joint Strategic Needs Assessments and local community engagement.