

Report to: NHS Hull Clinical Commissioning Group Board

Date of Meeting: 24 November 2017

Subject: Safeguarding Children Quarterly Update (Q1)

Presented by: Sarah Smyth, Director of Quality & Clinical Governance / Executive Nurse
Lorna Morris, Designated Nurse for Safeguarding Children

Author: Lorna Morris, Designated Nurse for Safeguarding Children

STATUS OF THE REPORT:

To approve	<input type="checkbox"/>	To endorse	<input type="checkbox"/>
To ratify	<input type="checkbox"/>	To discuss	<input type="checkbox"/>
To consider	<input type="checkbox"/>	For information	<input type="checkbox"/>
To note	<input checked="" type="checkbox"/>		

PURPOSE OF REPORT:

- To provide an update in regard to safeguarding children arrangements across the Hull area.
- To demonstrate how NHS Hull CCG, and commissioned providers, are fulfilling legislative duties in relation to safeguarding children in accordance with the NHS England Accountability and Assurance Framework 2015 and Working Together 2015.

LEVEL OF CONFIDENCE:

NHS Hull CCG

PROCESS	Rating
There is a HIGH level of confidence in NHS Hull CCG discharging it's duties in relation to safeguarding children.	Medium
PERFORMANCE	
There is a HIGH level of confidence in NHS Hull CCG discharging it's duties in relation to safeguarding children.	Medium

Hull & East Yorkshire Hospitals (HEY)

PROCESS	Rating
There is a HIGH level of confidence in HEYHT discharging it's duties in relation to safeguarding children.	High
PERFORMANCE	
There is a MEDIUM level of confidence in HEYHT discharging it's duties in relation to safeguarding children.	High

Humber Foundation Trust (HFT)

PROCESS	Rating
There is a MEDIUM level of confidence in HFT discharging it's duties in relation to safeguarding children.	Medium
PERFORMANCE	
There is a MEDIUM level of confidence in HFT discharging it's duties in relation to safeguarding children.	Medium

City Health Care Partnership (CHCP)

PROCESS	Rating
There is a HIGH level of confidence in CHCP discharging it's duties in relation to safeguarding children.	Medium
PERFORMANCE	
There is a HIGH level of confidence in CHCP discharging it's duties in relation to safeguarding children.	Medium

SPIRE

PROCESS	Rating
There is a MEDIUM level of confidence in SPIRE discharging it's duties in relation to safeguarding children.	Medium
PERFORMANCE	
There is a MEDIUM level of confidence in SPIRE discharging it's duties in relation to safeguarding children.	Medium

YAS

PROCESS	Rating
There is a HIGH level of confidence in YAS discharging it's duties in relation to safeguarding children.	High
PERFORMANCE	
There is a HIGH level of confidence in YAS discharging it's duties in relation to safeguarding children.	High

RECOMMENDATIONS:

The members of the Committee are requested to note this report in relation to safeguarding children activity and the responsibilities and actions of the NHS Hull Clinical Commissioning Group and providers.

REPORT EXEMPT FROM PUBLIC DISCLOSURE
 No Yes

Highly sensitive information for which media interest may not be in the best interests of adults with care and support needs.

**CCG STRATEGY
NUMBER
REFERENCE**
**ASSURANCE
FRAMEWORK
REFERENCE
NUMBER**

<p>Objective 1 In 2020 we will work together better to enable the people of Hull to improve their own health, resilience, wellbeing and to achieve their aspirations for the future.</p> <p>Objective 3 NHS Hull CCG will fulfil its statutory responsibilities in relation to children, in accordance with the Children Acts 1989 and 2004. Section 11 of the Children Act 2004 requires CCGs to work effectively with local authorities, the police and third sector organisations in the operation of the Local Safeguarding Board (LSCB).</p>	<p>Effective arrangements to safeguard children are in place.</p> <p>CCGs as commissioners of local health services need to assure themselves that the organisations from which they commission have effective safeguarding arrangements in place.</p>
---	--

<p>IMPLICATIONS: <i>(summary of key implications, including risks, associated with the paper)</i></p>	
Finance	There are no financial risks associated with this report.
HR	There are no HR implications.
Quality	Risks not addressed may result in safeguarding adult concerns.
Safety	Risks not addressed may result in safety concerns for adults at risk of abuse and neglect.

<p>ENGAGEMENT: <i>(Explain what engagement has taken place e.g. Partners, patients and the public prior to presenting the paper and the outcome of this).</i></p> <p>Engagement takes place with commissioned provider organisations via the Hull and East Riding Safeguarding Children Health Liaison Group. Challenge and scrutiny of provider safeguarding compliance and performance takes place via the Clinical Quality Forums and Contract Management Boards. Inter-agency working takes place with partner agencies via the Hull Safeguarding Children Board (HSCB). Engagement with GPs takes place via the NHS CCG Board and through the Protected Time for Learning (PTL) programme.</p>
--

<p>LEGAL ISSUES: <i>(Summarise key legal issues / legislation relevant to the report)</i></p> <p>All safeguarding activity described in this report is underpinned by current legislation and statutory guidance.</p>
--

EQUALITY AND DIVERSITY ISSUES: (summary of impact, if any, of CCG's duty to promote equality and diversity based on Equality Impact Analysis (EIA). **All** reports relating to new services, changes to existing services or CCG strategies / policies **must** have a valid EIA and will not be received by the Committee if this is not appended to the report)

	Tick relevant box
An Equality Impact Analysis/Assessment is not required for this report.	√
An Equality Impact Analysis/Assessment has been completed and approved by the lead Director for Equality and Diversity. As a result of performing the analysis/assessment there are no actions arising from the analysis/assessment.	
An Equality Impact Analysis/Assessment has been completed and there are actions arising from the analysis/assessment and these are included in section xx in the enclosed report.	

THE NHS CONSTITUTION: (How the report supports the NHS Constitution)

Safeguarding children is integral to the NHS Constitution and is framed by the values and principles which guide the NHS, with particular reference to the provision of high quality care that is safe, effective and focussed on patient experience.

Principle 1 – The NHS provides a comprehensive service, available to all.

Principle 2 – Access to NHS services is based on clinical need, not an individual's ability to pay.

Principle 3 – The NHS aspires to the highest standards of excellence and professionalism.

Principle 4 – NHS services must reflect the needs and preferences of patients, their families and carers.

Principle 5 – The NHS works across organisational boundaries and in partnership with other organisations in the interest of patients, local communities and the wider population.

Principle 6 – The NHS is committed to providing best value for taxpayers money and the most effective, fair and sustainable use of finite resources.

Principle 7 – The NHS is accountable to the public, communities and patients that it serves.

SAFEGUARDING CHILDREN UPDATE

1. INTRODUCTION

The purpose of this report is to:

- a) Provide an update in regard to safeguarding children arrangements across the city of Hull and surrounding area.
- b) Demonstrate how NHS Hull CCG is fulfilling its safeguarding monitoring responsibilities in relation to children in accordance with Working Together (March 2015) and the NHS England Accountability and Assurance Framework (July 2015).

2. NHS HULL CCG

2.1 Training compliance

Overall safeguarding children training compliance declined to 47% in Q1 from 53% in Q4. This was due to access difficulties owing to the migration to the national electronic staff record (ESR) system. Whilst the difficulties were being rectified two face to face safeguarding children sessions were arranged for NHS Hull CCG staff and the e learning programme is now available. Compliance has risen to 71% in Q2.

2.2 Governance and Accountability

NHS Hull CCG remains compliant with the requirements for statutory safeguarding posts.

NHS Hull CCG currently has a post out to advert for a Designated Nurse Looked After Children/ Deputy Designated Nurse Safeguarding Children with an interview date set for the end of October 2017.

The Designated Nurse Safeguarding Children continues to sit on the HSCB Serious Case Review sub-committee and panels for 4 Serious Case Reviews (SCRs) and 1 learning lessons review (LLR). NHS England has led a critical incident review across Hull and East Riding CCGs in which the NHS Hull CCG Executive safeguarding lead and the Designated nurse have contributed.

2.3 Supervision

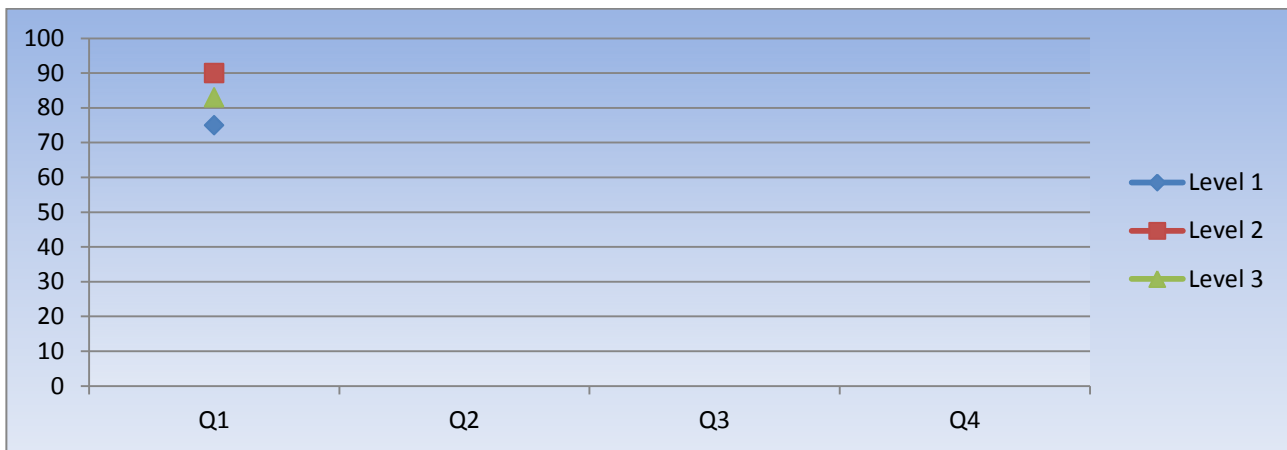
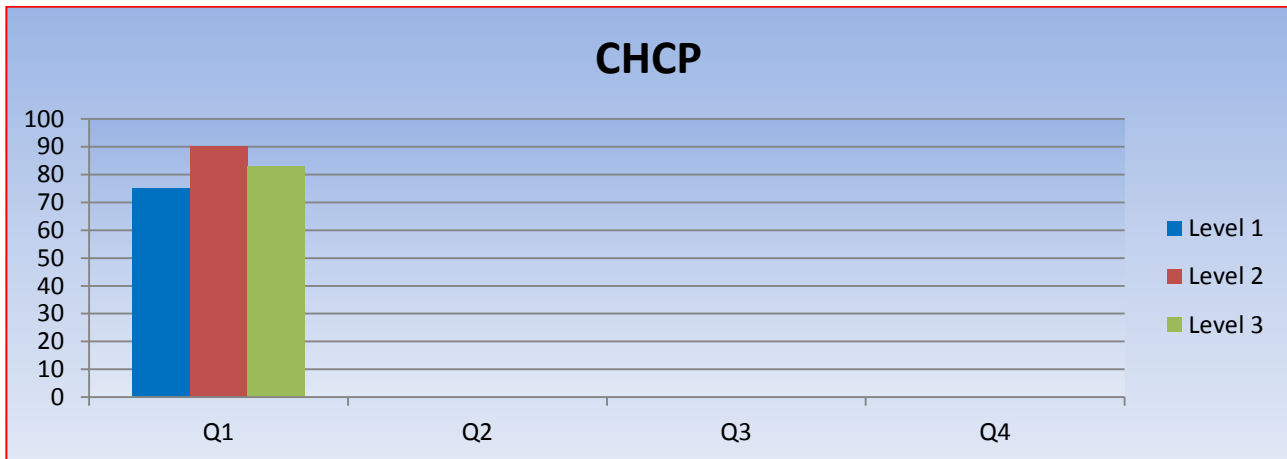
Designated and Named Safeguarding professionals access formal safeguarding supervision commensurate with their roles. The NHS Hull CCG supervision policy is under development. The designated nurse for safeguarding children and designated lead for safeguarding adults have met with mental health commissioners and members of the communications and engagement team including complaints and offer supervision.

3. CITY HEALTH CARE PARTNERSHIP

3.1 Training compliance

2017/18	Q1 (Q4)	Q2	Q3	Q4
Level 1	75% (91%)			

Level 2	90% (91%)			
Level 3	83% (82%)			



The action plan by CHCP to address the reduction in Level 1 training compliance is being monitored via CMB. Additional sessions have been scheduled with a “no cancellation” rule applied by the Learning Resources Team; sessions will take place regardless of numbers booked. Staff have been encouraged to complete quality assured e-learning packages, both by conventional methods and through the new easy access web based platform. Bespoke additional sessions have been offered at the convenience of services and direct approaches have been made to non-compliant staff.

3.2 Governance and Accountability

CHCP is compliant with the requirements for statutory safeguarding posts.

As outlined in the NHS England Assurance and Accountability Framework, it is the responsibility of the CCG to secure the expertise of the Designated Nurse for Looked After Children (LAC). The skills, competencies and role requirements are outlined in two key pieces of guidance: Promoting the health and well-being of looked after children (DOH/ DfE March 2015 and The Intercollegiate Framework for Looked After Children (Royal Colleges March 2015). This includes a recommendation around the whole time equivalent per child population. NHS Hull CCG has commissioned the post as part of the overall LAC health provision via an SLA with CHCP. Currently the Named Nurse for safeguarding children/ lead for adults is also the Designated Nurse for LAC. Identified as an area for review within the NHS England LAC benchmarking exercise reported in June 2016 and a

recommendation within the CQC inspection of Children Looked After and Safeguarding in January 2017, NHS Hull CCG currently has a post out to advert.

3.3 Looked After Children Health Assessments

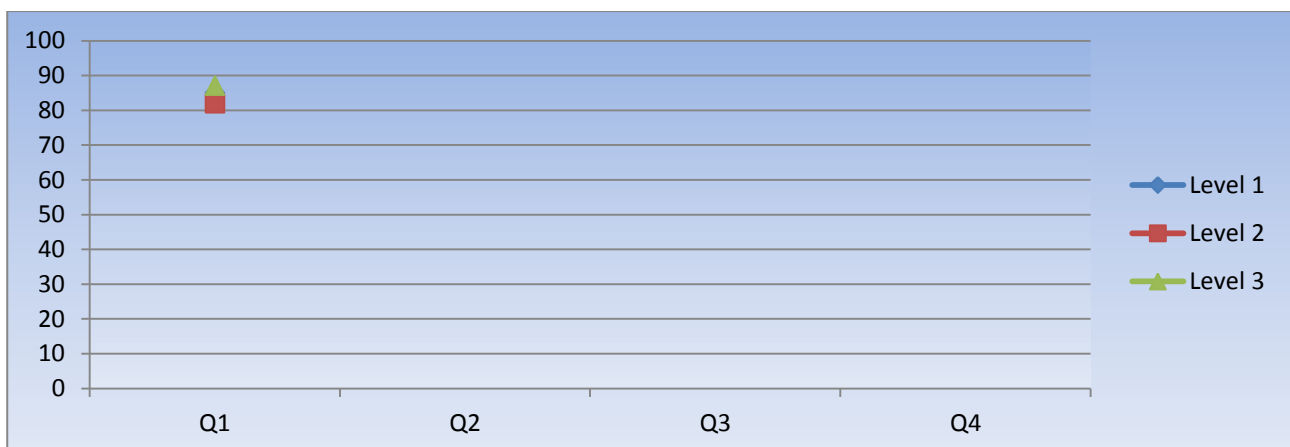
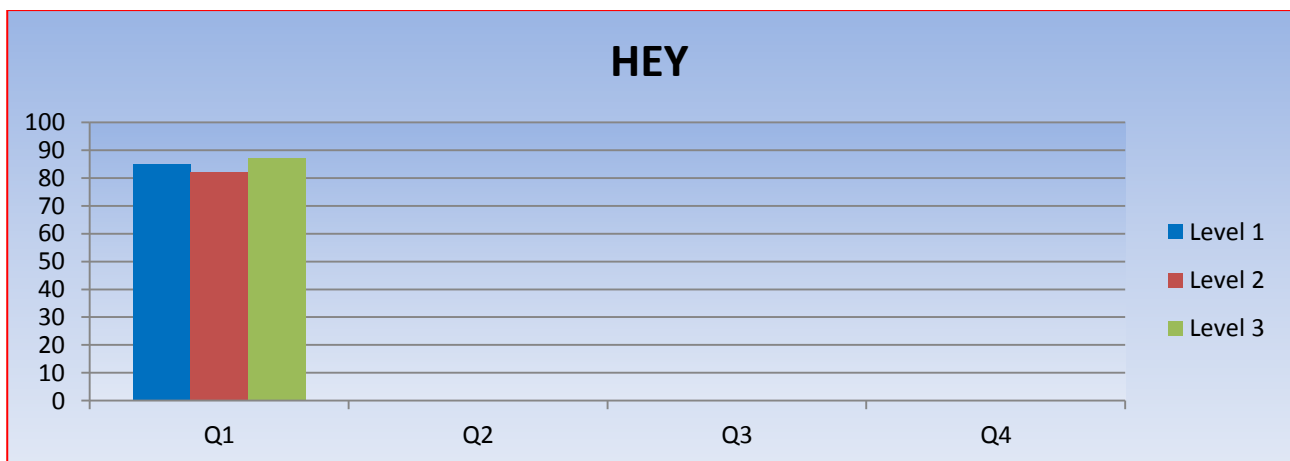
Monthly reporting against the required timescales for LAC receiving an initial health assessment to CMB continues. An escalation process is utilised and frequent monitoring meetings between NHS Hull CCG, CHCP and the local authority are scheduled to take place. Breaches continue to be small in number.

A reduction in the number of review health assessments taking place within the statutory timescales was reported in Q1 to CMB. This was due to administrative error and CHCP has put a checking system in place to resolve this issue.

4. HULL AND EAST YORKSHIRE HOSPITAL TRUST

4.1 Training compliance

2017/18	Q1(Q4)	Q2	Q3	Q4
Level 1	85% (82.4%)			
Level 2	82% (81.3%)			
Level 3	87% (88.7%)			



The additional training places made available since July 2016 has continued to demonstrate the required compliance for level 3 training.

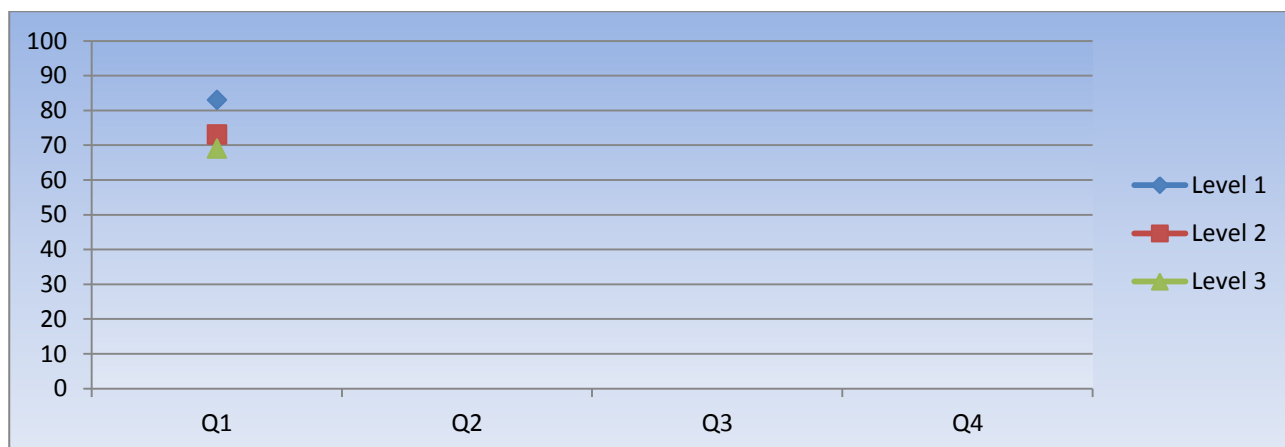
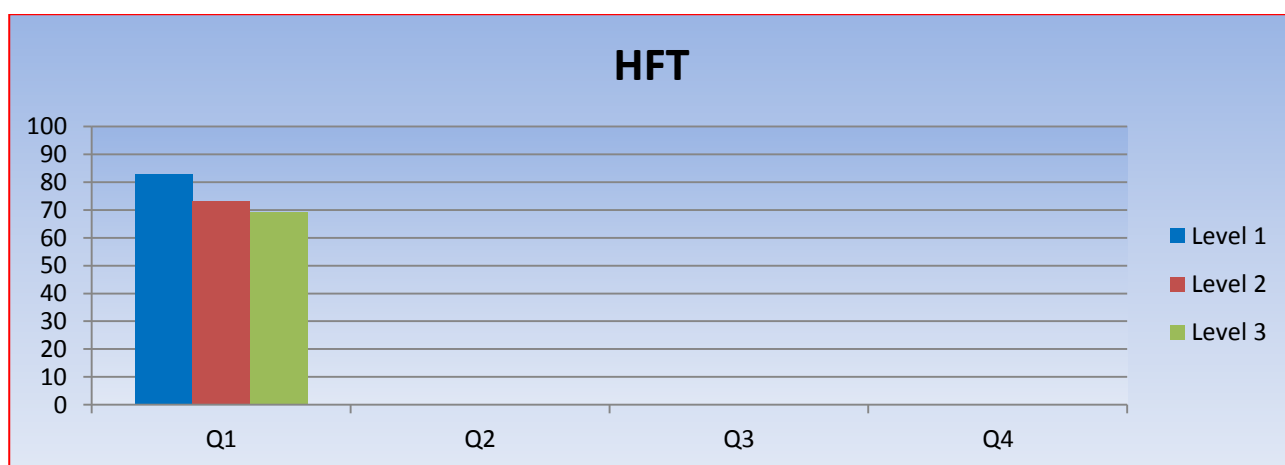
4.2 Supervision

A CQC recommendation from the 2017 Looked After Children and Safeguarding inspection is that HEYHT review the current structure and resource commitment to safeguarding supervision in the maternity service. Monitoring is taking place via the HCLAS. Progress regarding the HCLAS action plan will be included within the Q2 report.

5. HUMBER NHS FOUNDATION TRUST

5.1 Training compliance

2017/18	Q1 (Q4)	Q2	Q3	Q4
Level 1	83% (84%)			
Level 2	73% (72.2%)			
Level 3	69.9%(64.9%)			



Level 3 training uptake at Q1 last year was 31%. There has been a process of escalation by the Executive leads for both NHS Hull and NHS East Riding CCGs to the HFT Director of Nursing, Quality, Patient Experience and Safeguarding and via the CQF and CMB in relation to the poor uptake of level 3 training. An action plan including clear trajectories has been produced by the Trust which is being monitored via CQF and CMB. Uptake incrementally indicates significant progress with the Trust aim to have reached the required 80% uptake by the end of October 2017.

5.2 Governance and accountability

The post of Named Nurse for Safeguarding Children continues to be filled on an interim basis. However, the substantive post holder has resigned so it is anticipated that HFT will recruit on a permanent basis.

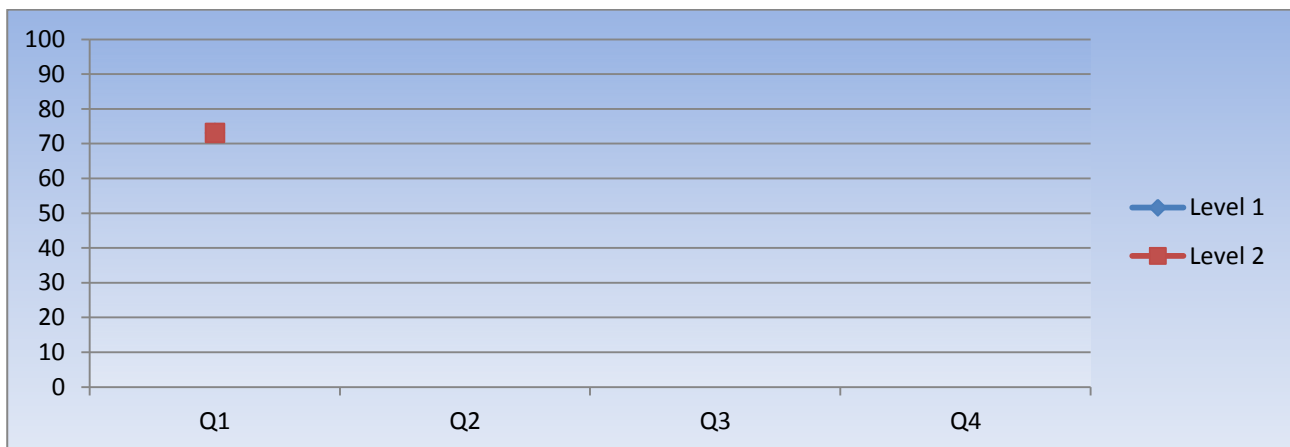
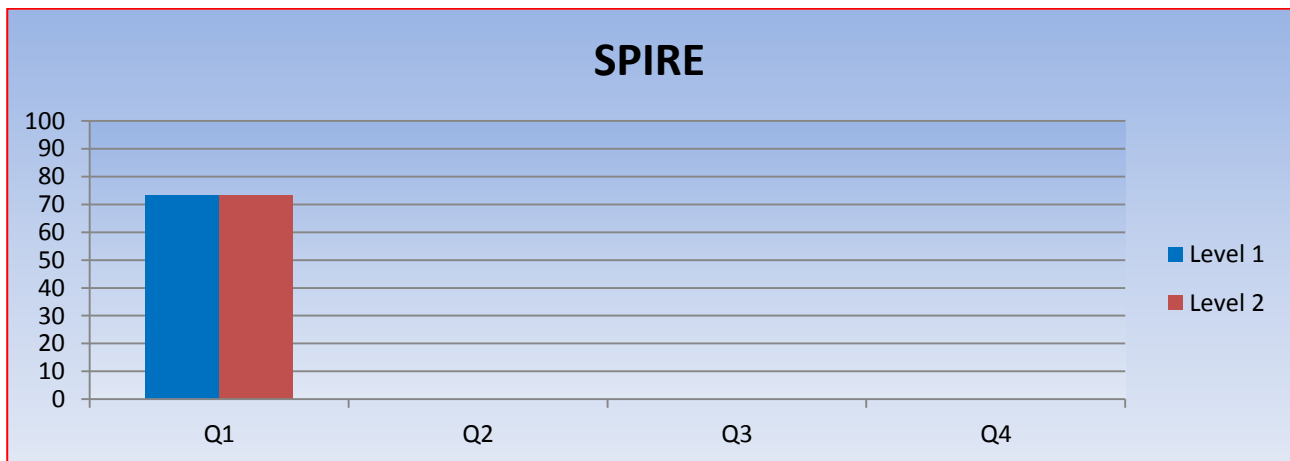
5.3 Supervision

The January 2017 CQC inspection identified this as an area requiring still further development and is included within the inspection action which is being monitored via the HCLAS. Progress regarding the HCLAS action plan will be included in the Q2 report.

6. SPIRE

6.1 Training compliance

2017/18	Q1(Q4)	Q2	Q3	Q4
Level 1	73.4%(39.8%)			
Level 2	73.4%(39.8%)			

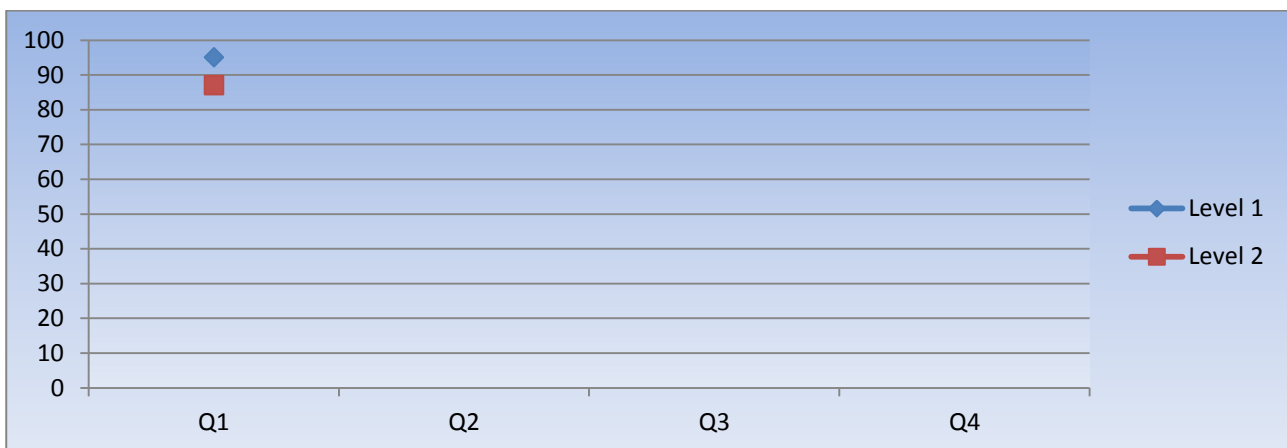
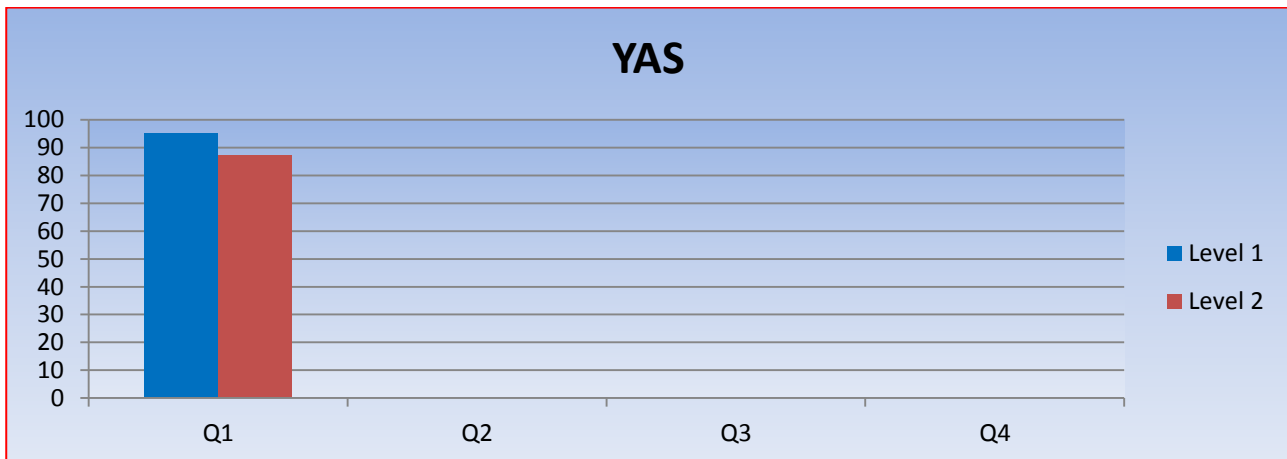


The system of reporting incrementally month on month remains in place. However, Q1 '17/18 uptake compares favourably to the 60% reporting for Q1 in '16/17. The designated leads have met with NHS Hull CCG contracting colleagues in relation to the CMB reporting schedule for '18/19 and Safeguarding children level 3 uptake is to reported separately from Q2.

7. YORKSHIRE AMBULANCE SERVICE (YAS)

7.1 Training compliance

2017/18	Q1(Q4)	Q2	Q3	Q4
Level 1	95.9%(95.6%)			
Level 2	87.2% (88%)			
Level 3				



8. PRIMARY CARE

8.1 Training compliance

GPs are required to undertake Intercollegiate Document level 3 safeguarding children training. This is developed by the Hull and East Riding Training Steering Group and delivered in part through an evening training session. The revised 3 year programme commenced delivery in March 2017. The final session for this year takes place in early October with an overall uptake report planned for Q2.

8.2 Governance and accountability

The Named GP for Safeguarding Children continues to expand her role including offering advice and support to GPs covering a range of issues, records of which are being maintained in order to audit any themes or trends. A practice leads group has now been created with regular communication taking place via email with both GPs and practice managers. The GP portal has been revised and updated. The child protection case conference report proformas have been reviewed. Following

revision of the SLA with CHCP the pilot payment for receipt of quality reports is due to commence in November 2017.

9. RECOMMENDATIONS

It is recommended that the NHS Hull CCG Board note this report for information and accept quarterly progress reports.

Glossary of terms

CHCP	City Health Care Partnership
CMB	Contract Management Board
CQC	Care Quality Commission
CQF	Clinical Quality Forum
HCLAS	Hull Children Looked After and Safeguarding
HEYHT	Hull and East Yorkshire Hospital Trust
HFT	Humber NHS Foundation Trust
HSCB	Hull Safeguarding Children Board
LAC	Looked After Children
LLR	Learning Lessons Review
PTL	Protected Time for Learning
SCR	Serious Case Review
SLA	Service Level agreement
YAS	Yorkshire Ambulance Service